

Organizer:



Singapore
General Hospital
SingHealth

30 UROLOGY
Years since 1988

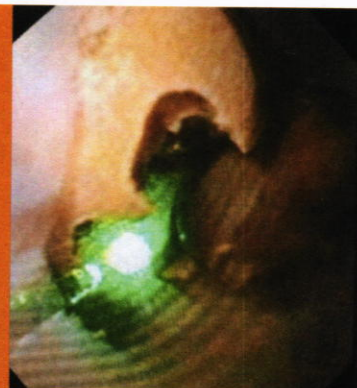


Asian
School of
Urology

An educational body of the Urological Association of Asia

SGH Urology 30th Anniversary STONE SYMPOSIUM in collaboration with the Asian School of Urology

Venue: Academia (SGH Campus) | 3 November 2018 Saturday



INTRODUCTION

This symposium will cover contemporary topics in stone management including cutting edge technology and practices. Hands-on models will be available for more a realistic experience. Overseas and local experts in the field will share their practices and discuss their most interesting and difficult cases in a Semi-live interactive format.

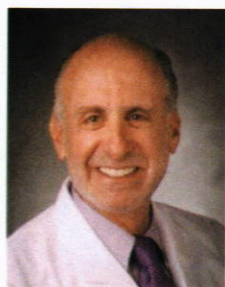
COURSE OBJECTIVES

- Update on current stone management practices and cutting edge technology
- Learn from actual cases as discussed by the experts
- Interact with regional Endourologists to share practices, experiences and forge informal ties

TARGET AUDIENCE

- Endourologists and General Urologists; Senior Residents

OVERSEAS FACULTY



Dr Glenn Preminger

Duke University Medical Center
USA



Prof Olivier Traxer

Université Pierre et Marie Curie Paris
France

Secretariat:



Institute of Medical Simulation

The SingHealth Duke-NUS Institute of Medical Simulation (SIMS) is one of Singapore's largest simulation centres with a comprehensive range of simulation modalities, training programmes and cutting-edge facilities. SIMS is committed to delivering quality simulation training by providing a safe and supervised environment for healthcare professionals to sharpen their clinical skills. The institute draws upon the synergy of collective expertise, curriculum and resources in SingHealth and Duke-NUS. SIMS aims to be the leading global institution in medical simulation, pushing frontiers in medical education to advance patient care.

www.singhealthacademy.edu.sg/sims

sims@singhealth.com.sg

SIMS is part of SingHealth Academy, the education arm of SingHealth.

REGISTER BY 31 Aug 2018

Course Fee (inclusive of GST)

Local Delegates: S\$107.00

Regional Delegates: S\$214.00

- Certificate of Attendance will be issued to those who attend 75% of the workshop
- CME Points: Application in progress

For registration, email your name, institution, department and contact details to sims.sssc@singhealth.com.sg



Organizer:



Singapore
General Hospital
SingHealth

30 UROLOGY
Years since 1988



Asian
School of
Urology

An educational body of the Urological Association of Asia

PROGRAMME SCHEDULE (PROVISIONAL)

Time (hrs)	Topic	Faculty
0830 - 0900	Registration & Breakfast	
0900 - 1000	How I do it: upper pole puncture How I do it: Lateral PCNL Laparoscopy in Stone treatment Single-use fURS	Dr Michael Wong Dr Lee Kim Tiong Dr Tan Yeh Hong Dr Chong Tsung Wen
1000 - 1030	Refreshment	
1030 - 1200	Semi live demo and case discussion	Local and Overseas Panel
1200 - 1400	Lunch Engagement with Exhibitors and hands-on models	
1400-1530	<u>Keynote Lectures:</u> Update on stone research and medical management RIRS & Laser lithotripsy: tricks and tips	Dr Glenn Preminger Prof Olivier Traxer
1530	End of Course	

COURSE DIRECTOR

Dr Chong Tsung Wen

Senior Consultant, Department of Urology
Singapore General Hospital
Singapore

LOCAL/ REGIONAL TEACHING FACULTY

Dr Lee Kim Tiong

KPJ Puteri Specialist Hospital
Malaysia

Dr Michael Wong

Mount Elizabeth Hospital
Singapore

Dr Tan Yeh Hong

Mount Elizabeth Hospital
Singapore

The SingHealth Duke-NUS Institute of Medical Simulation (SIMS) is one of Singapore's largest simulation centres with a comprehensive range of simulation modalities, training programmes and cutting-edge facilities. SIMS is committed to delivering quality simulation training by providing a safe and supervised environment for healthcare professionals to sharpen their clinical skills. The institute draws upon the synergy of collective expertise, curriculum and resources in SingHealth and Duke-NUS. SIMS aims to be the leading global institution in medical simulation, pushing frontiers in medical education to advance patient care.

